

# Vector 300 Selective Soldering System

Designed for high mix, high value, and low to mid volume PCB production, the Vector 300 selective machine can be programmed in minutes to handle basic to complex dip, drag, wire bond, and other through-hole soldering processes. The Vector 300 features best-in-class servo motion control for speed, accuracy, and repeatability. The closed loop temperature control of N2 allows for superior thermal performance. Miniwave nozzles allow for wave stability and defect free performance.

# Vector 300

## Selective Soldering System

### Operation

X/Y/Z Control	Standard
Interpolated Motion	Simultaneous X, Y, and Z
Process Range	12 x 12"   300 x 300mm
Programmability	Unlimited program storage capacity
Min/Max PCB Size	1 x 3" to 14 x 18"
Computer and Monitor	Included   Windows 7/10

### Solder Process Control

Load Method	Manual   Universal PCB Holder Standard (SMEMA Option)
Approach	360°   Unlimited Access to All Solder Points
Nozzle Material	Wetted Chromium Alloy
STD Nozzle Sizes	(ID) 1.5, 2, 2.5, 3, 4, 5, 8, 10, 20 mm & Custom
Keep Away	1.5 mm Standard   0.5 mm Capable
Max Wave Height	6 mm Standing Wave Height
Component Max Height	3"   Top & Bottom of PCB

### Flux Process Control

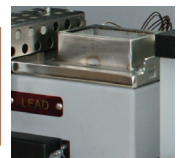
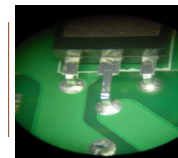
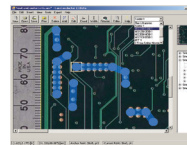
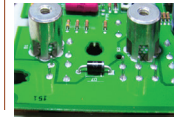
Flux Capacity	1 Liter Pressurized
Drop Jet Flux	STD, No Clean Process
Spray Flux	STD, Water Soluble Process
Dual Chemistry	Option

### Solder Pot Management

Solder Pot Capacity	30 lbs   13.5 kgs
Temp Control	PID proportioning (0-400°C) ± 2°C
Dross Production	1.5 Ounces per 8 Hours
Maintenance Cycle	80 Hour Pump Clean

### Nitrogen Management

N2 Intertion	Hentec PROHeat™
N2 Temp Control	0-500 °C Closed Loop Set Point
Consumption	30-40 SCFH
Recommended Purity	<10 PPM O2H



Free software upgrades | 2 year system warranty | 4 year solder pot warranty

